

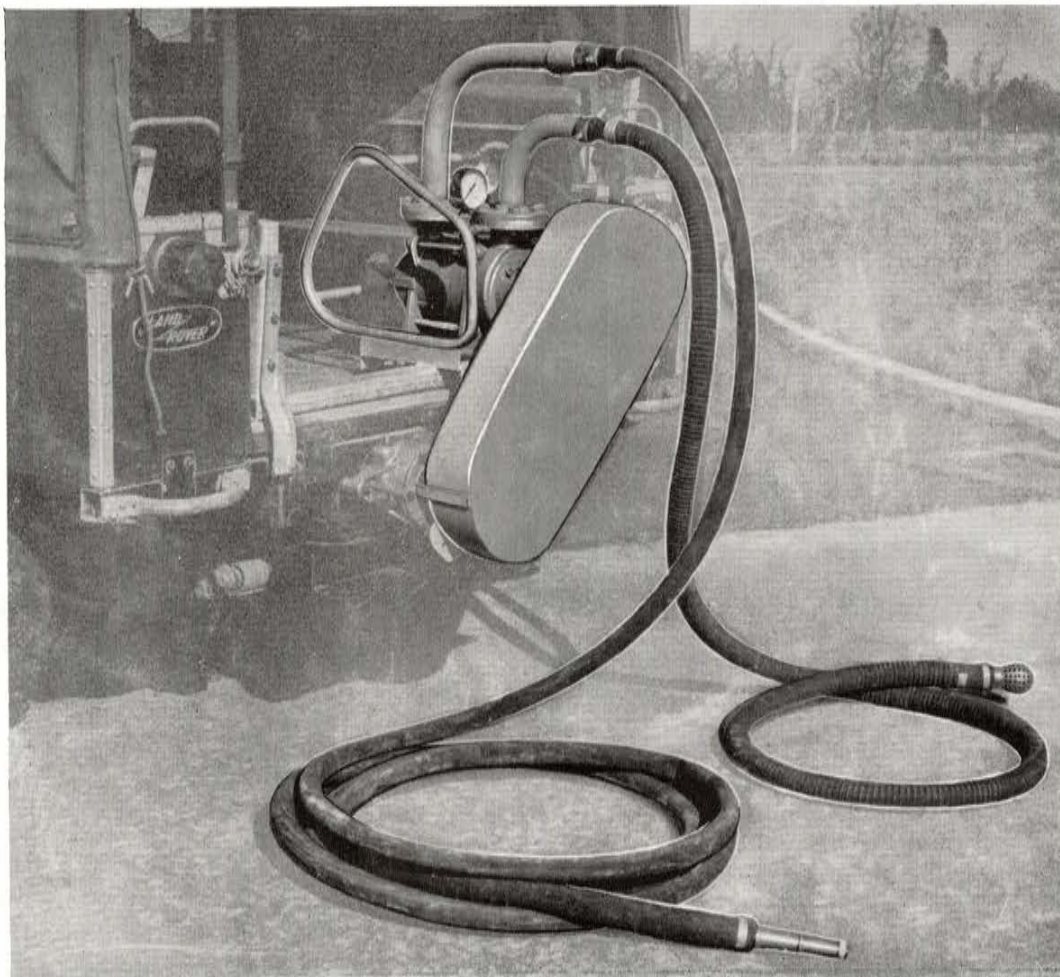
As approved by the Rover  
Co. Ltd. for use with the

# AUTOMETRIC

## Multi-stage Turbine Pump



- ★ OUTPUTS UP TO 2500 GALLONS PER HOUR
- ★ PRESSURES UP TO 100 P.S.I. AT 1720 R.P.M.



- ★ SUCTION LIFTS UP TO 27 FEET
- ★ SELF PRIMING

Manufactured by **AUTOMETRIC PUMPS LTD.**  
**WATERSIDE • MAIDSTONE • KENT • ENGLAND**

Telephone : Maidstone 4728.

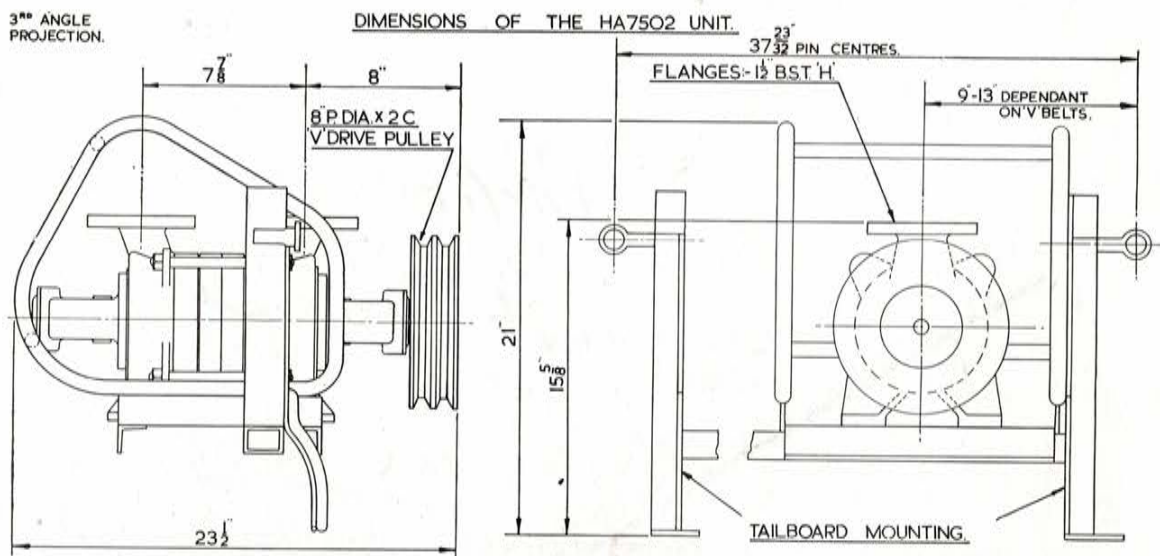
Cables & Grams : AUTOMETRIC Maidstone.

Codes : Bentley's Complete and Second Phrase.



# SPECIFICATION & DETAILS of the HA7502 AUTOMETRIC Multi-stage Turbine Pump powered by Land Rover

- ★ LIQUID TRANSFER
- ★ EMERGENCY FIREFIGHTING
- ★ PRESSURE BOOSTING
- ★ SPRAYING
- ★ WASHDOWN



- ★ RIGID MAIN HOUSING WITH FLANGED PORTS.
- ★ STAINLESS STEEL IMPELLERS AND SHAFT.
- ★ OUTBOARD BALL AND ROLLER BEARINGS.
- ★ NO BEARINGS IN FLUID BEING HANDLED.

### PARTS LIST

<u>Description of Part</u>	<u>Part No.</u>	<u>Qty Per Set</u>	<u>Description of Part</u>	<u>Part No.</u>	<u>Qty Per Set</u>
TAILBOARD MOUNTING	B2815	1	PULLEY BELT	C55	2
PUMP	C2684	1	BELT GUARD	B2812	1
PUMP PULLEY 8" Pitch Dia.		1	SPLINED PULLEY	B2824	1

WEIGHTS & CASE DIMENSIONS FOR EXPORT. Net Wt. 170lbs. Gross Wt. 220lbs. Case Size 44" x 29" x 27"

**LAND ROVER EXTRAS REQUIRED :-**

REAR POWER TAKE-OFF  
HAND THROTTLE FOR PETROL ENGINES