

As approved by the Rover Co.  
Ltd. for use with the

# THE L.R. 150

SA 150 amp. Portable Welding Generator Unit



1 LAND ROVER  
+ 1 L.R. 150



= WELDING CURRENT  
WHEREVER YOU WANT IT!

**T**HE NEW L.R. 150 Engine Driven Welder has been specially designed by Lincoln Electric Co. Ltd., as a portable "package" 150 ampere Direct Current Welding Unit for use with the LAND ROVER. It is driven directly from the LAND ROVER rear p.t.—o. by a simple, efficient belt drive, and is

mounted on a special frame and is quickly and easily fitted in place of the tailboard, on any model LAND ROVER except Station Wagons.

Each unit is supplied with a comprehensive set of accessories to enable welding to be commenced immediately.

*Full details and specification are given overleaf.*

Manufactured by **LINCOLN ELECTRIC CO. LTD.**  
**WELWYN GARDEN CITY · HERTFORDSHIRE · ENGLAND**

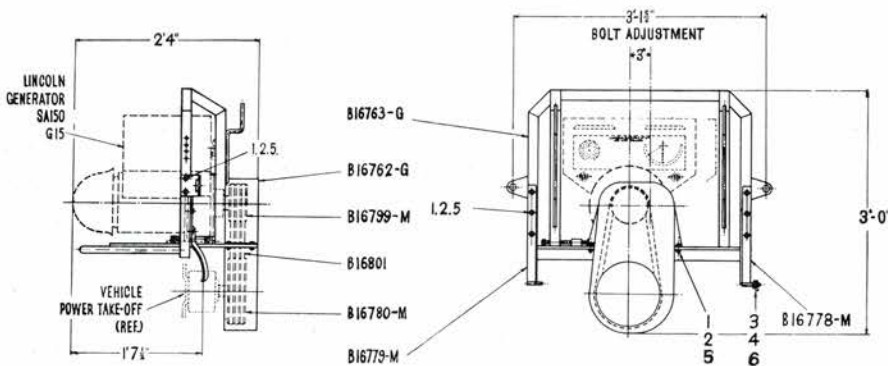
Telephone: Welwyn Garden 920/4, 4581/5 · Cables & Grams: "Shield-Arc", Welwyn Garden City

# SPECIFICATION & DETAILS OF THE L.R. 150

## SA 150 amp. Portable Welding Generator Unit powered by the Land Rover

<b>GENERATOR</b>	Single operator, variable voltage type with laminated pole pieces. Output can be varied both as to voltage and current independently. Produces uniform welding current, of good responsiveness for the speedy welding of most metals and alloys, light gauge and heavy materials. Can be used with either bare or coated electrodes. Ideal for Carbon Arc Welding.			
<b>GENERATOR CONTROL</b>	The special Lincoln Electric Co. Ltd. control system permits independent adjustment of voltage and current giving complete and separate control of arc heat and arc penetration for easy, speedy welding. Both the voltage control and current control are self-indicating, simplifying the "setting" of the welder. Wing-nut cable terminals on welder base permit easy change of welding current polarity.			
<b>TYPE DESIGNATION</b>	<b>CONTINUOUS HAND-WELDING RATING</b>	<b>CURRENT RANGE</b>	<b>R.P.M.</b>	<b>ENGINE POWER REQUIRED</b>
SA 150	150 amp. at 30 volts N.E.M.A.	30 - 200 amp.	3000	16 b.h.p.

### DIMENSIONS OF THE L.R. 150 UNIT



No.	CODE	DESCRIPTION	No. OFF
1	B.5132	BOLT—HEX. HD. 5/16" B.S.W. x 1"	14
2	B.5202	WASHER—STD. 5/16" DIA.	14
3	B.5206	WASHER—STD. 5/16" DIA.	2
4	B.5229	WASHER—SPRING—DOUBLE COIL 5/16" DIA.	1
5	B.5264	NUT—AEROTIGHT. 5/16" B.S.W.	14
6	B.5986	SPLIT PIN. 3/16" DIA. x 1 1/4"	1

UNIT MOUNTED USING TAILBOARD HINGE BRACKETS AND FASTENING PINS, WITH TAILBOARD REMOVED.

### PARTS LIST

Part No.	Description of Part	Qty. Per Set
G.15	Generator—S.A.150	1
B.16763/G	Mounting	1
B.16778/M	Hinge R.H.	1
B.16779/M	Hinge L.H.	1
B.5206	5/16" dia. Washer—Std.	2
B.5229	5/16" dia. Washer—Spring—Double Coil	1
B.5132	5/16" BSW x 1" Bolt—Hex. Hd.	14
B.5264	5/16" BSW. Nut—Aerotight	14
B.5986	3/16" dia. x 1 1/4" Split Pin	1
B.16762/G	Belt Guard	1
B.16780/M	Pulley 9 1/2" dia.	1
B.1534/M	Pulley 5 1/2" dia. o/d Pulley Belt (Fenner C48)	1
B.5202	Washer—Std.	14

### WEIGHTS AND CASE DIMENSIONS FOR EXPORT

NET WT. 350 lbs (159 kilos) GROSS WT. 475 lbs (216 kilos)  
CASE SIZE: Length 35" Width 31" Height 31"

### LAND ROVER EXTRAS REQUIRED:—

- Rear p.t.—o.
- Engine Speed Governor for Petrol Engined Vehicles.
- Oil Cooler Equipment, required for use in Tropical Climates.