

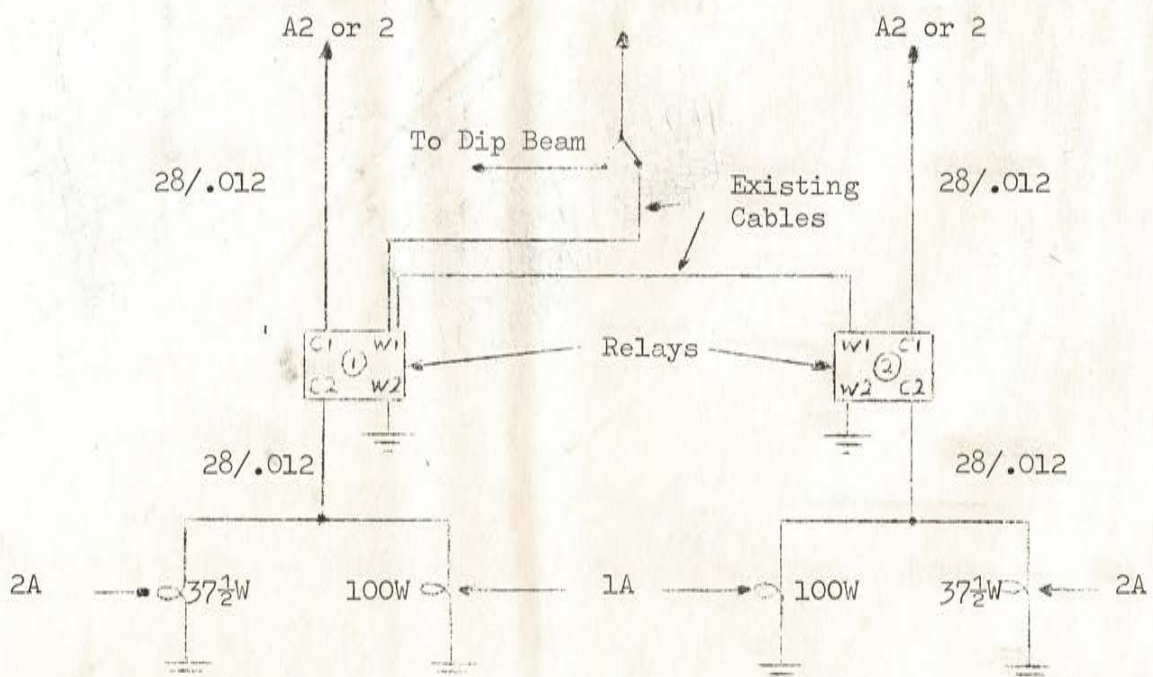
NOVEMBER 1968

Replacement of Original

5 $\frac{3}{4}$ " (1A) Light Units with 100 watt Units

When replacing 12V 37 $\frac{1}{2}$ W and 50W (No. 1A) sealed beam light units with 100W units (Part No. 54523620), the following points should be observed.

1. 100W units should only be fitted to vehicles equipped with charging systems capable of a minimum output of 30 Amps.
2. Connect 6RA relays (Part No. 33213) into the feed cables to each pair of headlamps (main beam only).
3. Feed cables to headlamps and relays must be capable of carrying the required current. Typical wiring circuit is shown below. Use 28/.012 (minimum) cables from fusebox (terminal A2 or 2) to each relay (terminal C1). Connect existing cable from dip switch, to relay 1 (terminal W1), and link to relay 2.



Continued ...

4. An alternative circuit which may be preferred is shown below. Use 44/.012 cable from fuse-box (terminal A2 or 2) to relay 1 (Terminal C1) and 28/.012 cable between relays 1 and 2 (terminal C1). Connect existing cable from dip switch as in 3 (Page 1).

