

93822

SOLIHULL, WARWICKSHIRE, England
Telephone No.: Sheldon 4242
Telegrams: Rovrepair, Solihull
Telex No.: 33-156

Rover Service News Letter No. 107

September, 1959.

TO ALL DISTRIBUTORS AND DEALERS

Dear Sirs,

During the past month the following changes and developments have taken place.

SECTION I

POLICY

No items of Policy this month.

SECTION II

WORKSHOP AND PARTS INFORMATION

Item 523 SUBJECT:

OIL PUMPS FOR RECONDITIONING

MODELS:

Land-Rover 2½ litre petrol and diesel models.

REMARKS:

Will Distributors and Dealers please note that when oil pumps Part No. 247662 as fitted to the Land-Rover 2½ litre petrol and diesel models, are sent to the factory for reconditioning they must be returned complete with the pump drive shaft and filter.

Item 524 SUBJECT:

FRONT BRAKE LINK PIN AND STEADY POST

MODELS:

Rover 3 litre.

PART NUMBERS:

Steady post for brake shoe	2	510306
Link pin for brake shoe	2	510307

REMARKS:

Some early 3 litre models, with drum type front brakes, have link pins with a narrow groove, .265 in. (6.5 mm) wide, in the head, with steady post to suit; later models have link pins with a groove .330 in. (8 mm) wide, again with steady post to suit.

When replacements are required on these early models, both link pin and steady post of the later wide groove type must be supplied and fitted.

Item 525 SUBJECT:

DYNAMO AND CURRENT-VOLTAGE REGULATOR

MODELS:

Rover 3 litre.

MODIFICATION:

Introduction of Lucas C.45 PV6 dynamo, with current-voltage regulator to suit, which provides an increase in output from 22 to 25 amps.

PART NUMBERS:

Dynamo, Lucas C.45 PV6 No. 22530	1	512248
Current-voltage regulator, Lucas RB.310 No. 37304	1	512250

COMMENCING
NUMBERS:

Dynamo, engines numbered:

4-speed basic models 8.75-1 compression ratio, from 625900494 onwards
4-speed basic models 7.5-1 compression ratio, from 626930105 onwards
4-speed, with overdrive, 8.75-1 compression ratio, from 626900633 onwards
4-speed, with overdrive, 7.5-1 compression ratio, from 626960026 onwards
Borg-Warner models 8.75-1 compression ratio, from 630900513 onwards
Borg-Warner models 7.5-1 compression ratio, from 631900064 onwards

Current-voltage regulator, cars numbered:

4-speed Home models from 625900956 onwards
 4-speed Export R.H.D. models from 626900157 onwards
 4-speed Export L.H.D. models from 628900101 onwards.
 Borg-Warner Home models from 630900452 onwards
 Borg-Warner Export R.H.D. models from 631900059 onwards
 Borg-Warner Export L.H.D. models from 633900072 onwards

REMARKS: The latest type dynamo can be used on earlier models, but the latest type current-voltage regulator must not be used with the earlier C.45 PV5 dynamo, otherwise there is a danger of burning out the dynamo.

Item 526 SUBJECT: STARTER MOTOR

MODELS: Rover 3 litre.

MODIFICATION: Improved starter motor with higher starting torque.

PART NUMBER: Starter motor, Lucas No. 26164A 1 510236

COMMENCING NUMBERS:

Engines numbered:

4-speed basic models 8.75-1 compression ratio, from 625900475 onwards
 4-speed basic models 7.5-1 compression ratio, from 626960026 onwards
 4-speed with overdrive 8.75-1 compression ratio, from 626900587 onwards
 4-speed with overdrive 7.5-1 compression ratio, from 626960026 onwards
 Borg-Warner models 8.75-1 compression ratio, from 630900442 onwards
 Borg-Warner models 7.5-1 compression ratio from 631900048 onwards

REMARKS: The latest type starter motor must be used as a replacement on all earlier 3 litre models.

Item 527 SUBJECT: CLUTCH PLATE

MODELS: Land-Rover 2½ litre petrol and diesel models.

MODIFICATION: Introduction of clutch plate with Mintex 7/240 facing material.

PART NUMBERS: Clutch plate, Borg & Beck No. 47626/123 1 511681 2½ litre petrol models
 Clutch plate, Borg & Beck No. 47626/122 1 511682 Diesel models

COMMENCING NUMBERS:

Engines numbered:

2½ litre Petrol models from 151918737 onwards
 88 Diesel models from 146902433 onwards
 109 Diesel models from 156901896 onwards

REMARKS: Early and late type clutch plates are completely interchangeable.

Item 528 SUBJECT: OVERDRIVE UNIT DRAIN PLUG

MODELS: 1959 '60', '75', '90', '105' and 3 litre.

PART NUMBERS: Drain plug for overdrive unit 1 513894

REMARKS: Current production overdrive units have a large notched drain plug in place of the hexagon-headed plug previously used. See Fig. 1.

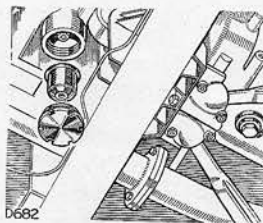


Fig. 1. Overdrive drain plug and filter.

This affects service only in as much as when the overdrive drain plug is removed the filter is also withdrawn. It is not retained by a separate bolt.

Item 529 SUBJECT: FRONT HUB DRIVING MEMBER

MODELS: Land-Rover.

MODIFICATION: Introduction of front hub driving member fitted with filler plug to make provision for priming front hub bearings.

PART NUMBERS: Front hub driving member complete with filler plug 2 512887

COMMENCING NUMBERS: Front axles numbered:
 88 R.H.D. models from 141907805 onwards
 88 L.H.D. models from 144904229 onwards
 109 R.H.D. models from 151905517 onwards
 109 L.H.D. models from 154902399 onwards

REMARKS: The latest type front hub driving member can be used as a replacement on all earlier Land-Rovers from 1948 onwards.

The oil filler plug in the driving member is for initial filling only. During normal running the oil level is maintained from the differential and the hub requires no further attention in this respect. If the hub is replaced or has been stripped down for any purpose, it must be filled on assembly with one-third of a pint (0,20 litre) of the same grade of oil as used in the differential.

Item 530 SUBJECT: BRAKE OVERHAUL

MODELS: All.

PART NUMBERS: White brake grease for mechanical brake parts 1 tube 514577
 Red rubber grease for rubber brake parts 1 tube 514578

REMARKS: Tubes of white brake grease and red rubber grease, for use when overhauling mechanical and hydraulic brake systems, are now available from our Parts Department under the part numbers shown.

The white brake grease is also available in a carton of 100 tubes made up into ten separate display packs of ten tubes each and the red rubber grease is obtainable in a carton containing a display pack of ten tubes.

Item 531 SUBJECT: CLUTCH LINKAGE

MODELS: 1959 Rover 3 litre with 4-speed gearbox.

MODIFICATION: Introduction of spring balance over-centre linkage to give lighter clutch pedal operation.

PART NUMBERS:

Clutch master cylinder	1	514132
Operating lever for clutch	1	507863
Anchor for clutch return spring	1	510893
Clutch balance spring	1	507857
Over-centre lever for clutch....	1	512152
Hook for balance spring at over-centre lever	1	512158
Support bracket for over-centre lever	1	512150
Stud, long					1	513950
Stud, short					1	507997
Self-locking nut					2	251321
Pivot bolt					1	512472
Distance piece					1	512471
Needle bearing					1	512161
"O" ring					2	271013
Castle nut					1	254972
Special washer					1	512157
Split pin					1	2423
Stop bolt					1	255011
Locknut					1	254850

} Fixing support bracket

} Fixing over-centre lever to support bracket

} For over-centre lever

Adjusting rod, over-centre lever to operating lever	1	510896	
Clevis, front, for adjusting rod	1	510937	
Clevis, rear, for adjusting rod	1	275199	
Locknut, front	} For		1	510938	
Locknut, rear		adjuster rod	1	254851	
Clevis pin	} Fixing clevis to over-centre		2	216421	
Split pin		and operating levers	2	2392	
Adaptor for clutch slave cylinder GI.374662	1	512650	
Adaptor for clutch master cylinder GI.374662	1	512650	
				R.H.D.	
Gasket for adaptor GI.378711	2	233220	
			1 off on	L.H.D.	
Gasket for hose to clutch master cylinder adaptor GI.378700	1	216914	
Pipe, clutch master cylinder to hose	1	512648	
				R.H.D.	
Pipe, clutch master cylinder to hose	1	512974	
				L.H.D.	
Hose to clutch slave cylinder GI.3703919	1	512649	
Nut GI.74335	1	216912	
Shakeproof washer GI.3703919	} Fixing hose		1	512651	
Banjo bolt GI.376102W			1	512235	
Banjo GI.352241W	} For clutch	} master cylinder	} L.H.D.	1	512113
Gasket for banjo GI.378700				1	216914
Gasket for banjo GI.378703				1	512387
Clip	} For pipe		1	50183	
Clip		} across dash	1	243395	

COMMENCING
NUMBERS:

Vehicles numbered:

3 litre with 4-speed gearbox, Home, from 625901037 onwards
 3 litre with 4-speed gearbox, L.H.D., Export, from 628900121 onwards
 3 litre with 4-speed gearbox, R.H.D., Export, from 626900176 onwards

REMARKS:

The parts above are only interchangeable as a complete set with the items used on earlier models. A kit of over-centre clutch linkage parts to convert earlier 3 litre models, complete with fitting instructions, can be obtained from our Parts Department under Part No. 515394.

Item 532 SUBJECT:

RESISTER FOR HEATER PLUGS

MODELS:

Land-Rover Diesel.

MODIFICATION:

Introduction of improved resister for heater plugs, KLG type B.R.Q.1, to reduce warming-up period of heater plugs from 30 to 10 seconds.

PART NUMBER:

Resister for heater plug KLG type B.R.Q.1 1 512338

COMMENCING
NUMBERS:

Vehicles numbered:

88 Diesel R.H.D. Home models from 146901582 onwards
 88 Diesel R.H.D. Export models from 147900196 onwards
 88 Diesel L.H.D. Export models from 149900312 onwards
 109 Diesel R.H.D. Home models from 156900965 onwards
 109 Diesel R.H.D. Export models from 157900511 onwards
 109 Diesel L.H.D. Export models from 159900994 onwards
 109 Diesel Station Wagon R.H.D. Home models from 166900001 onwards
 109 Diesel Station Wagon R.H.D. Export models from 167900004 onwards
 109 Diesel Station Wagon L.H.D. Export models from 169900026 onwards

REMARKS:

The latest type resister for heater plugs can be fitted to any earlier Land-Rover Diesel model.

When using the latest type resister, and starting with a cold engine, it is only necessary to hold the starter key in the first position for 10 seconds.

It should be noted that on earlier models with the KLG R2736/Z type resister the amber warning light will glow immediately the starter switch key is turned. On later models with the KLG type B.R.Q.1. resister, the bulb of the warning light is in parallel with the resister and it will not glow until two or three seconds after the starter switch key is turned.

Item 533 SUBJECT: **FUEL SYSTEM**

MODELS: Land-Rover Series II 2¼ litre Petrol.

MODIFICATION: Introduction of nylon fuel pipe from pump to carburetter.

PART NUMBERS: Fuel pipe, pump to carburetter 1 507526
Clip for fuel pipe 1 50637

COMMENCING NUMBERS: Engines numbered:
2¼ litre petrol models from 151917549 onwards.

REMARKS: The latest type nylon fuel pipe, together with the clip, can be fitted to any earlier 2¼ litre petrol engine. One fuel feed elbow and the original pipe clip and grommet should be discarded.

Item 534 SUBJECT: **SUPPRESSOR FOR SPARKING PLUG**

MODELS: Land-Rover Series II 2¼ litre petrol.

MODIFICATION: Introduction of Lodge M.90X suppressors for the sparking plugs.

PART NUMBERS: Suppressor for sparking plug 4 513694
Rubber boot for suppressor 4 240408

COMMENCING NUMBERS: Engines numbered:
2¼ litre petrol models from 151919650 onwards.

REMARKS: The latest type suppressor can be fitted to any earlier 2¼ litre petrol model providing the rubber boot is also supplied.

Use a smear of Silicone Compound M.S.4 when fitting the rubber boot to plug cable and suppressor.

Item 535 SUBJECT: **TYRE PRESSURES**

MODELS: Rover 3 litre.

REMARKS: When 6.70" x 15 Michelin X tyres are fitted to the above model, the tyre pressures for normal use and fully laden conditions should be as follows:

Front	} 6.70" x 15 Michelin X tyres } Normal use and fully laden	26 lbs/sq.in. (1,8 kg/cm ²)
Rear		30 lbs/sq.in. (2,1 kg/cm ²)

Item 536 SUBJECT: **BONNET LOCKING MECHANISM**

MODELS: Rover 3 litre.

REMARKS: In the event of the bonnet on the Rover 3 litre models springing open, or proving difficult to open or close, there are four important points to be considered.

- The spring tension of the bonnet lock.
- The alignment of the lock and striker plate.
- The position of the safety catch.
- The adjustment of bonnet rubber buffers.

To adjust bonnet locking mechanism proceed as follows:

- Open the bonnet and remove the bonnet lock.
- Slacken lock nut and adjust lock bolt until it protrudes through the plate approximately ½ in. (12,5 mm). See Fig. 2.

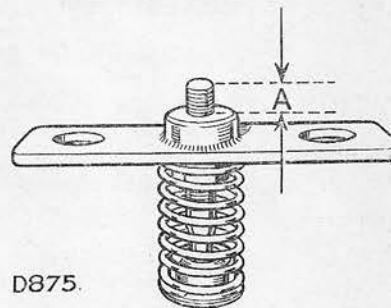


Fig. 2. Adjustment of lock bolt.

A— $\frac{1}{2}$ in. (12,5 mm).

3. Re-tighten lock nut.
4. Re-fit the bonnet lock but do not fully tighten at this stage.
5. Lower the bonnet and ensure that the spring retainer on the bonnet lock locates at the centre of the striker plate. See Fig. 3.

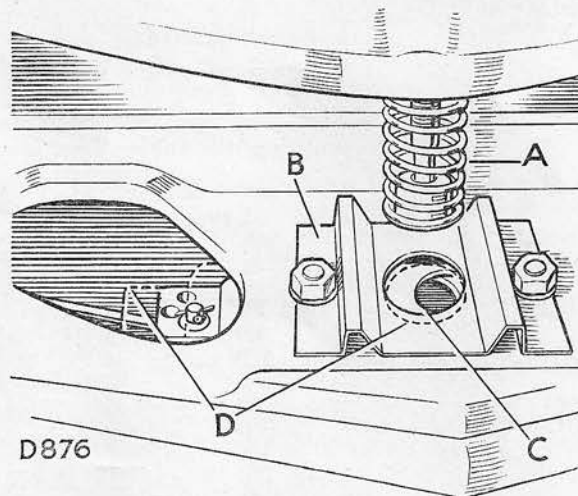


Fig. 3. Location of bonnet lock and striker plate.

A—Bonnet lock C—Slider catch in 'locked' position
 B—Striker plate D—Dotted outline shows slider catch in 'open' position.

Adjust as necessary and tighten the two securing bolts, the striker plate may also require adjustment to achieve the correct location between the two items.

6. Check the slider catch, underneath the striker plate, as follows: see Fig. 3.
 - (a) Ensure that the catch moves freely to the limit of its travel to the right, thereby allowing full engagement in the groove on the bonnet lock.
 - (b) That it completely clears the aperture in the striker plate when the operating knob in the car is pulled.

Adjust cable length if necessary.

7. With the bonnet in the closed position, press down on the bonnet panel directly above the locking mechanism; if it can be depressed, adjust the rubber buffers at each front corner of the bonnet to take up any free movement.

Item 537 SUBJECT: TOWING EQUIPMENT

MODELS: Land-Rover.

MODIFICATION: We give below details of all the towing attachments at present available for the Land-Rover; this list includes those items which were previously part of the basic vehicle.

PART NUMBERS:

Towing jaw, standard	1	234662
Attachment bracket for standard towing jaw	1	514651
Towing jaw, heavy duty	1	242493
Towing hook	1	332974
Rear tow plate	1	501683
Tow bar anchor, standard	1	231213
Tow bar anchor, combine harvester	1	231214
Extension plate for standard towing jaw	1	231498
Lifting and towing rings	1	267950

REMARKS: All the part numbers above represent kits complete with the necessary fixings.
The following sketches show the position of the various towing attachments when fitted to the Land-Rover.

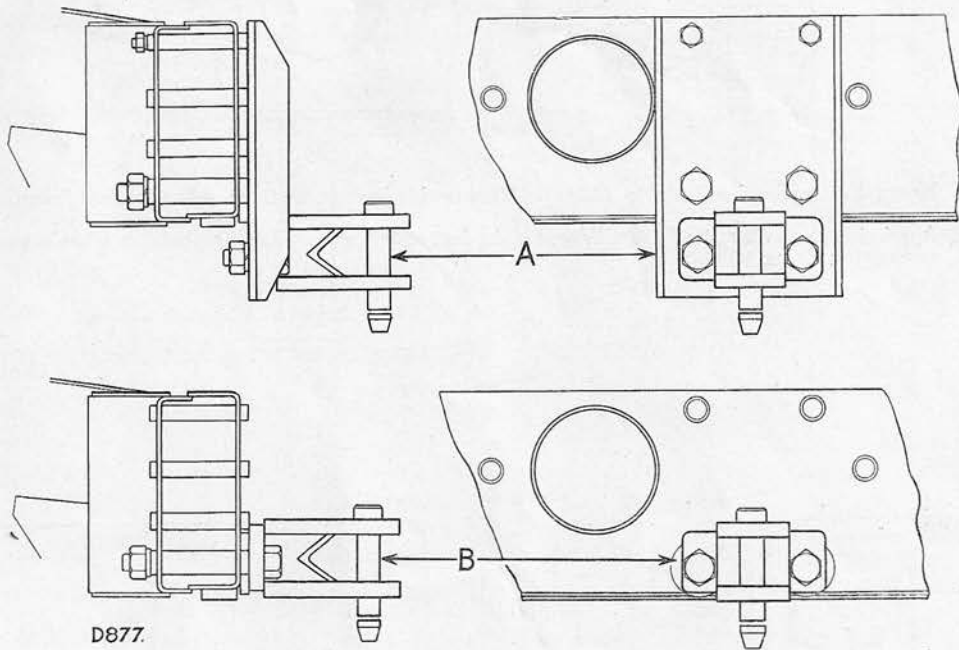


Fig. 4. Attachment bracket and standard towing jaw.

A—Attachment bracket Part No. 514651 with standard towing jaw Part No. 234662 fitted to bracket. Applicable to all models except the 88 Station Wagon. This is the normal position for the towing jaw on the 109 Station Wagon.

B—Standard towing jaw Part No. 234662 fitted to chassis frame. Can also be fitted to the 109 Station Wagon if the fuel tank is removed and replaced to allow access to the towing jaw fixing bolts.

These two parts were formerly part of the basic vehicle, they must now be ordered as optional equipment. The attachment bracket is still supplied as standard equipment on the 109 Station Wagon only.

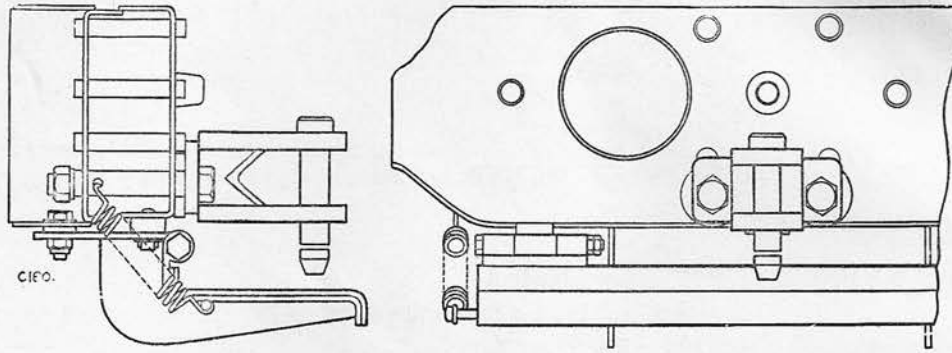


Fig. 5. Standard towing jaw Part No. 234662 fitted to chassis frame on Land-Rover 88 Station Wagon. The attachment bracket cannot be used with this model.

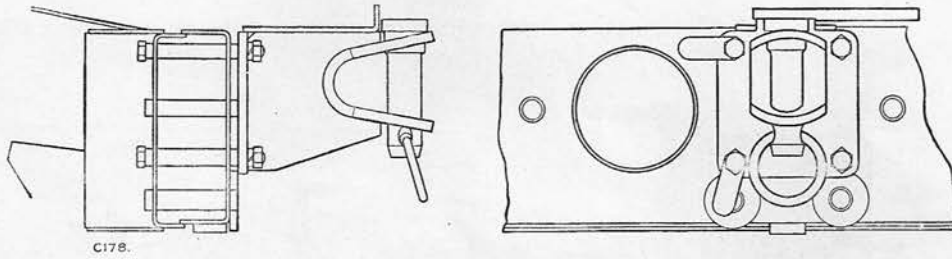


Fig. 6. Heavy duty towing jaw Part No. 242493. This towing jaw can be fitted only to chassis frame.

Applicable also to the 109 Station Wagon if the fuel tank is removed and replaced to allow access to the towing jaw fixing bolts.

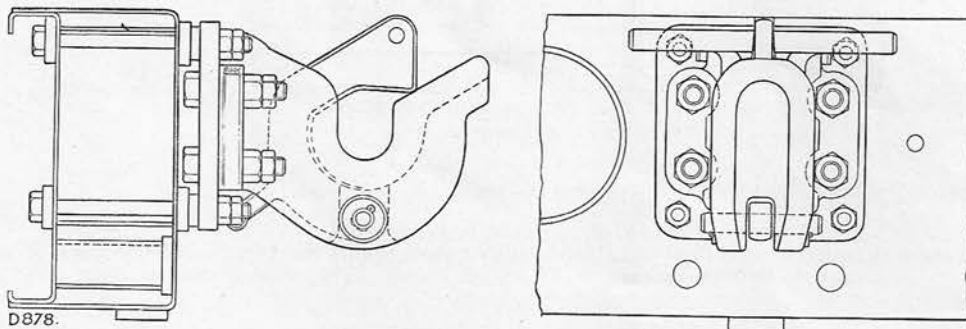


Fig. 7. Towing hook Part No. 332978. This item can only be fitted to the chassis frame in conjunction with an adaptor plate.

Applicable also to the 109 Station Wagon if the fuel tank is removed and replaced to allow access to the adaptor fixing bolts.

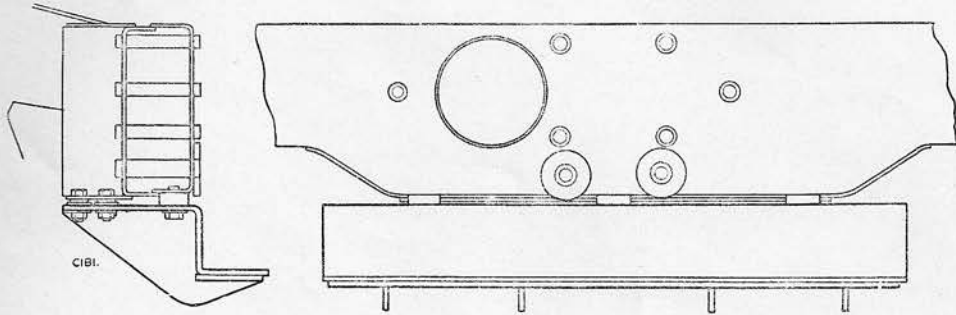


Fig. 8. Rear towing plate Part No. 501683 fitted to chassis frame.
Not applicable to the 109 Station Wagon.

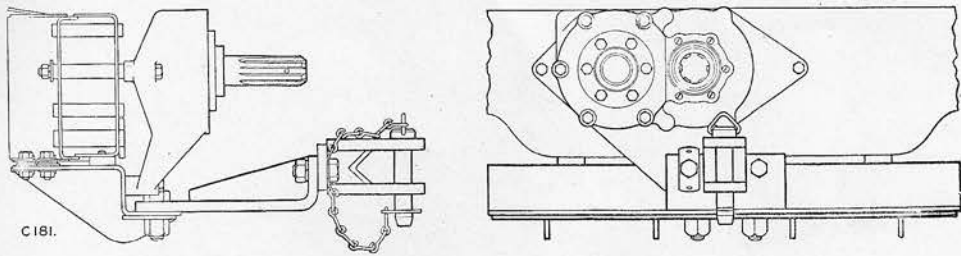


Fig. 9. Extension plate for standard towing jaw Part No. 231498 as used when the standard towing jaw is required and a rear power take-off unit is fitted. The rear tow plates Part Nos. 231213 and 231214 are used in a similar manner and can only be fitted in conjunction with rear tow plate Part No. 501683. These plates are not applicable to the 109 Station Wagon.

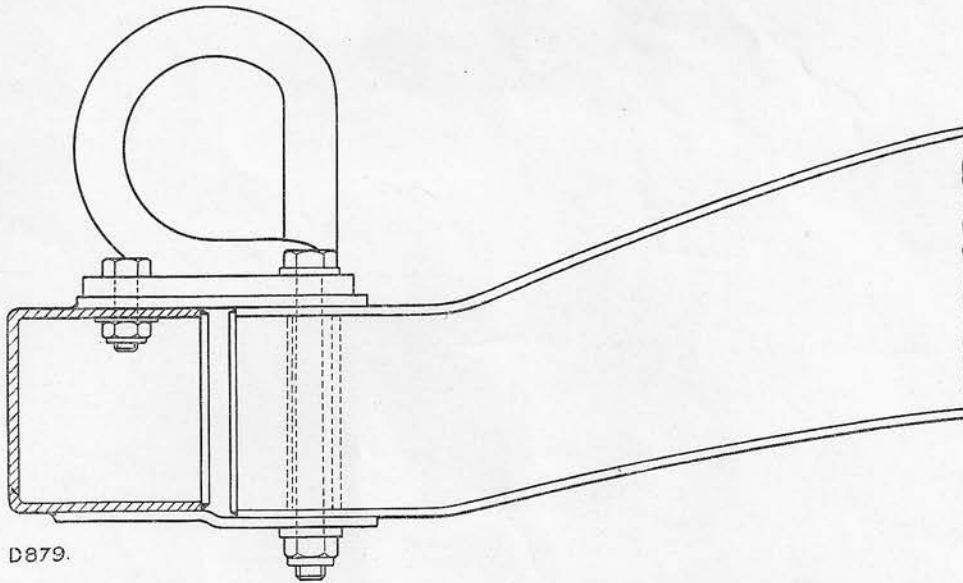


Fig. 10. Lifting and towing rings Part No. 267950; these are fitted at the front on the chassis frame.
Applicable to all models.

Yours faithfully,
for THE ROVER COMPANY LIMITED

M. Brewer.

Publications Editor,
Technical Service Department.